



# Integral Care Strategic Plan 2026-2028

## ***Mental Health and Well-Being for Everyone***



### **LEADERSHIP**

Lead through collaboration by strengthening our role as a trusted partner across housing, healthcare, education, and justice systems to drive coordinated care and shared community solutions.

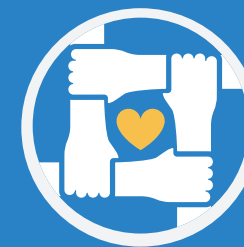
### **ACCESS**

Advance accessible care by expanding behavioral health services and ensuring equity so every community has opportunities for improved health and well-being.



### **CONTINUUM OF CARE**

Deliver a full Continuum of Care with responsive, evidence-based, suicide-safer, and person-centered healthcare that adapts to the diverse needs of individuals.



### **WORKFORCE**

Strengthen workforce talent and effectiveness by investing in a healthy, supported, and high-performing staff across all programs.

### **INNOVATION**

Drive innovation with transformative technology by integrating systems, streamlining operations, and using automation to enhance organizational effectiveness.



### **SUSTAINABILITY**

Optimize financial sustainability by securing flexible, mission-aligned funding to sustain services and grow long-term community impact.



## **MISSION**

To support the health and well-being of Travis County residents living with mental health challenges, substance use disorders, and intellectual and developmental disabilities.

**VALUES:** People, Access, Integrity, Excellence, Collaboration, Compassion, Community